



THE
GUARDIAN
UK UNIVERSITY
RANKED



STUDY WORLD
Lanka Campus



Pearson



BSc (Hons)
BUSINESS
Management

Why Should I Choose

STUDY WORLD LANKA CAMPUS



A state-of-the-art campus with exceptional higher education programs affiliated to Pearson and the University of Bolton that satisfy global standards.

At SWLC, Students have a wide range of undergraduate and postgraduate programmes to choose from the domains of Business, Engineering, Computing & Accountancy.

Study World Lanka Campus is a member of the Study World Group which has vast experience in delivering transnational education across India, UAE, Malta and Sri Lanka.



Why Should I Choose

UNIVERSITY OF BOLTON

A Public University in Greater Manchester, England.

Ranked among Top 40 in UK, out of 121 Universities listed in The Guardian University Guide 2023.

It has over 30,000 Local and International students.

It offers an exciting and challenging student experience with high levels of proactive student.

A teaching intensive, Research informed higher Education Institution whose distinctive high quality, student-focused, undergraduate, and postgraduate programme attract students from all over the world.



Be
Educated
and Feel
Empowered



BSc (Hons) Business Management

The BSc (Hons) Business Management Programme is designed to provide students with a comprehensive understanding of the fundamental principles and practices that drive successful organizations. This degree program offers a well-rounded education that combines theoretical knowledge with practical applications, enabling you to thrive in a variety of business settings.

PROGRAMME DETAILS



DURATION
3 Years



AWARDING BODY
University of Bolton



AWARDING BODY
BTEC Pearson



CREDITS
360



MODULE DETAILS

First Year Semester One Semester Two

- Module 1 Academic Skills
- Module 2 English Language & Communication
- Module 3 Introduction to Business
- Module 4 Marketing Principles
- Module 5 Human Resource Management
- Module 6 Accounting Principles
- Module 7 Principles of Economics
- Module 8 Fundamentals of IT
- Module 9 Entrepreneurship & Business Development
- Module 10 Business and the Business Environment
- Module 11 Marketing Essentials
- Module 12 Human Resource Management
- Module 13 Management and Operations
- Module 14 Managing a Successful Business Project

Second Year Semester Three Semester Four

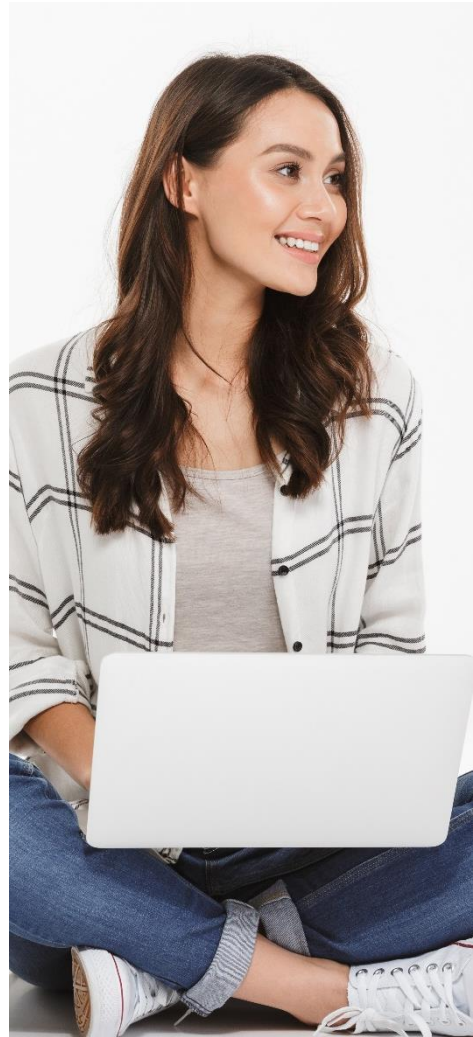
- Module 15 Management Accounting
- Module 16 Business Law
- Module 17 Financial Accounting
- Module 18 Research Project (Pearson-set)
- Module 19 Organisational Behavior
- Module 20 Operations and project management
- Module 21 Understanding and leading change
- Module 22 Global business environment
- Module 23 Business strategy
- Module 24 Business system

Third Year Semester Five Semester Six

- Module 25 Strategic Management
- Module 26 E Commerce and Contemporary Marketing Practice
- Module 27 Strategic Information Management
- Module 28 Logistics and Operations Management
- Module 29 Dissertation

ENTRY CRITERIA

- GCE O/L - 5 Simple Passes Including English Language.
- GCE A/L – 2 Simple Passes in any stream.
- GCE A2 Level – 2 Simple Passes in any stream.
- Any relevant qualification which can be approved by SWLC Academic Department.



CAREER OPTIONS

- Marketing Manager
- Brand Manager
- Entrepreneur
- HR Manager
- Business Analyst
- Business Development Manager

SWLC STUDENTS' LIFE



FEES STRUCTURE

- SWLC Application & Registration Fee
 - Pearson & Bolton Registration Fee
 - SWLC Course Fee
-
- Flexible Payment Options.
 - Fees payable for re-sit or additional examinations and repeat modules are not included in course fees.
 - For Fee details and discounts, Contact SWLC Admissions Department.



STUDY WORLD LANKA CAMPUS
282/1, HIGH LEVEL RD, NUGEGODA, SRI LANKA.



076 943 5454 | 076 942 5454 | 077 772 7106



011 285 6656 | 011 715 0112



INFO-SWLC@SWEHG.COM



[HTTPS://STUDYWORLDANKA.COM](https://studyworldlanka.com)

FOLLOW US ON



Teaching
Excellence
Framework

